

EIB advisory support for project preparation

16/01/2025
Sarunas Bruzge

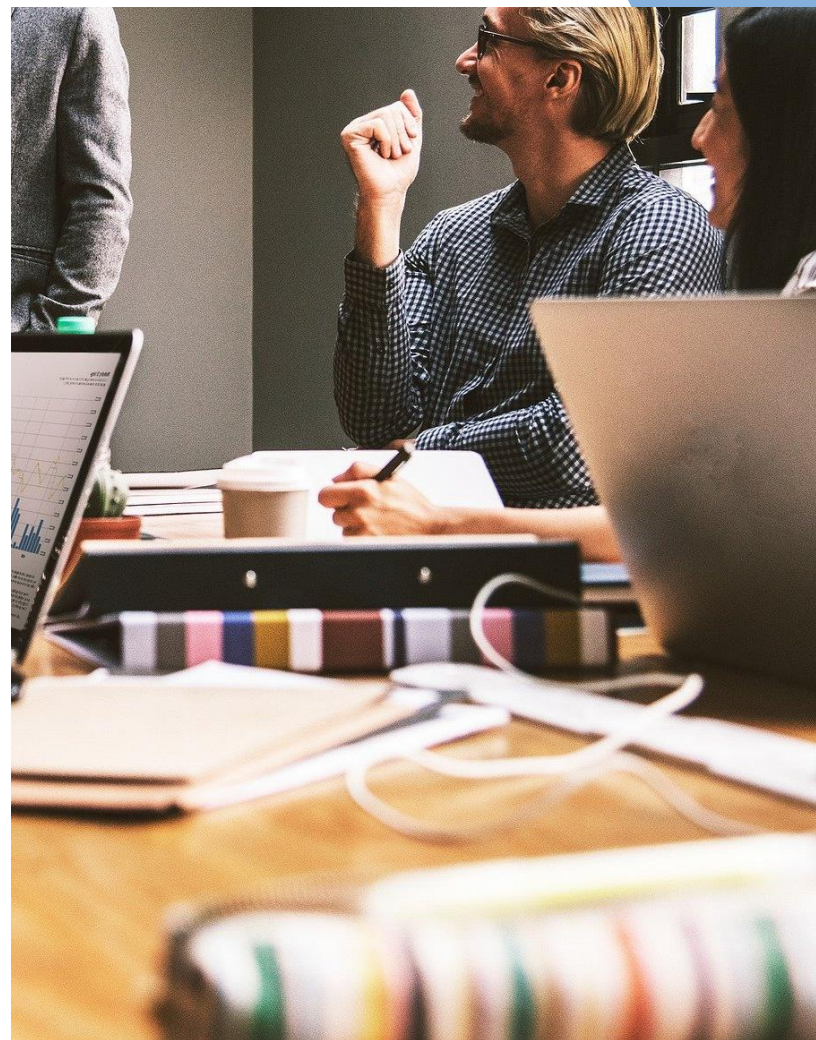


Content of the presentation

TARGET

JASPERS

ELENA



TARGET

What it is

A joint **European Commission – EIB initiative** created in 2021

Advisory support for **clean energy** and **energy efficiency** projects in coal, peat and oil shale regions in the EU

Support provided by dedicated **EIB team** and **external experts**



TARGET

Activities

- **Identification** of projects;
- **guidance**
 - > on potential sources of founding;
 - > on improving project quality and alignment to EU objectives;
 - > bring potential projects to mature level;
- **capacity building** of beneficiaries;
- **preparation** of project documentation;
- **handholding** of projects for support from other EU technical assistance programmes
- **support** for public authorities in project pipelines development

TARGET

Eligibility

Entities based in Coal+ regions, as defined under the [EU initiative for coal regions in transition](#)

Potential beneficiaries: regional and local authorities, project promoters (both public and private), energy communities.

Energy efficiency

- Renovation projects which improve the energy performance of existing public or residential buildings
- District heating/ cooling network modernisation projects, if part of the project is to switch to RES (or to build a RES-based district heating/cooling network from scratch) and fulfilling to the requirements of EE Directive.
- Smart grids (if part of and directly linked to the EE or CE eligible project)

Clean energy

- Energy (power and/or heat) production (or switch of the source of energy) from renewable non-fossil sources;
- Energy storages including batteries (battery production and use), thermal storages for DH systems (if part of and directly linked to the EE or CE eligible project)
- Use of “Waste” heat from industry/commercial sector (data centres) if supplied to the public DHC network.
- Energy community projects (RES-based or EE) e.g., related micro-grids incl. battery integration in the context of energy communities

TARGET

Value proposition (1)

Support for District Heating systems:

- DH Decarbonisation guidelines;
- Reviewing the current situation in the DH, benchmarking and analysis, providing recommendations for development needs;
- Identification of decarbonization options;
- Multicriteria analysis of decarbonization options;
- Advise in preparing DH decarbonization action plans

TARGET

Value proposition (2)

Renewable energy, including renewable energy communities:

- Developing REC project's business models
- Preparation of REC's business plans
- Support in the preparation of REC investment projects
- Providing capacity building through training

TARGET

Value proposition (3)

Energy efficiency, notably in buildings, also applying Energy Performance Contracting approach:

- Support to municipalities in preparation of investment plans and projects for EE renovation of buildings
- Support in the financing options of EE renovation investments including Energy Performance Contracting and PPP models.
- Advising on selecting the buildings for EE renovation based on MCA
- Providing guidance on energy performance, providing capacity building through training

TARGET

Value proposition (4)

Smart grid projects, including storage

Innovation and new types of energy infrastructure, such as green gases infrastructure, notably hydrogen:

- Checklist for evaluation of viability of hydrogen projects

TARGET

How to apply

Bottom up project identification

1. Contact us at target@eib.org
2. Submit (jointly filled) [application form](#) to the EIB for evaluation
3. Final decision to grant support made by the European Commission
4. Agreement for provision of advisory support signed with successful applications



JASPERS

What it is

Joint Assistance to Support Projects in European Regions, established in 2006

Partnership between the **European Commission** (EC) and the **European Investment Bank** (EIB)

Advisory support



JASPERS

Four principles



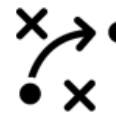
Proximity to beneficiaries with over **100** staff in **four** regional offices



Comprehensive approach covering the **whole** project cycle



Hands-on approach with **in-house** expertise



The **earlier** the involvement, the **higher** the value added.

JASPERS

Areas of expertise



Energy



Circular economy and solid waste



Innovative industries & transformation



Health and education



Ports / Airports



Rail



Sustainable roads



Sustainable Urban mobility



RDI and ICT & Broadband



Urban development



Water and waste water



Horizontal: Climate, environment, state aid, innovation, risk management...

JASPERS

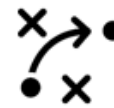
Services



Support for the development of projects
– methodological guidance, advice, project appraisal



Advice on horizontal issues



Assistance with **preparation of sector strategies, plans**



Support for the preparation of **programmes and schemes**



Selective **support to project implementation**



Capacity building - networking, training, knowledge transfer

JASPERS

How it works

- JASPERS advises on strategies and projects that contribute to a greener, more connected, and more innovative Europe. Our support helps beneficiaries align their projects with the highest EU standards, improving their chances of securing EU funding.
- JASPERS works on a not-for profit basis and is **free of charge** for its beneficiaries
- JASPERS, whilst promoting EU values and standards, is **independent** in its **advice** from particular interests at the national and international levels
- JASPERS acts as a trusted adviser of beneficiaries and promoters (responsible for project preparation), providing direct **high-level advice** to enhance the quality of projects
- JASPERS helps beneficiaries to make **better use** of the work **of consultants**, through advice on scoping and supervising consultancy assignments

ELENA

What it is

Established in 2009 as European Local Energy Assistance

Based on an agreement between EIB and EC

Grant for **preparation** (not implementation) of investment programmes

Over €331m awarded to projects supporting approx. **€11.2bn investments**



ELENA

General rules



Minimum investment of €30m



Grant covers up to 90% of costs related to project development



Budget allocation: first come, first served; approx **€40m** per year

Required level of maturity: preparatory studies carried out and main decisions taken before ELENA support request (ELENA proposal should demonstrate high probability that project will be implemented)



Obligation of investment implementation - leverage factor required:

20 for sustainable energy projects

10 for residential buildings and transport



If the leverage not achieved: grant may be clawed back



Investment: from Final beneficiary (applicant) and/or others

Timeframe: 3-4year implementation periods

ELENA

Eligibility

Sustainable Energy

- Building renovation (public & private)
- Renewables in buildings:
 - Solar PV+WH
 - Biomass boilers
- Street lighting
- District/cooling heating networks



Residential

- Housing renovation (private & social)
- Integrated Renewables:
 - Solar PV
 - Solar WH
 - Biomass boilers
 - Heat pumps



Urban transport

- Improved public transport and mobility
- Electric buses
- Charging stations
- Alternative fuel vehicles
- IT for model shift



WHO CAN APPLY: PUBLIC ENTITIES

Ready to assist:



Central government



Government agencies



Regional authorities



Local authorities
(municipalities)



Illustrative – not exhaustive

WHO CAN APPLY: PRIVATE ENTITIES

Ready to assist:

-  Energy agencies
-  One-stop-shops
-  Associations
 -  Social Housing
 -  Homeowners
 -  Business/Industry
-  Banks & financial intermediaries



ELIGIBLE COSTS

Internal staff

- Costs of personnel clearly assigned to the project
- Salaries, social security charges and other statutory costs

External experts

- Feasibility, design and market studies
- Structuring of programmes, business plans, energy audits
- Legal/financial advisory
- Preparing of tendering procedures
- Bundling of smaller projects to form bankable packages

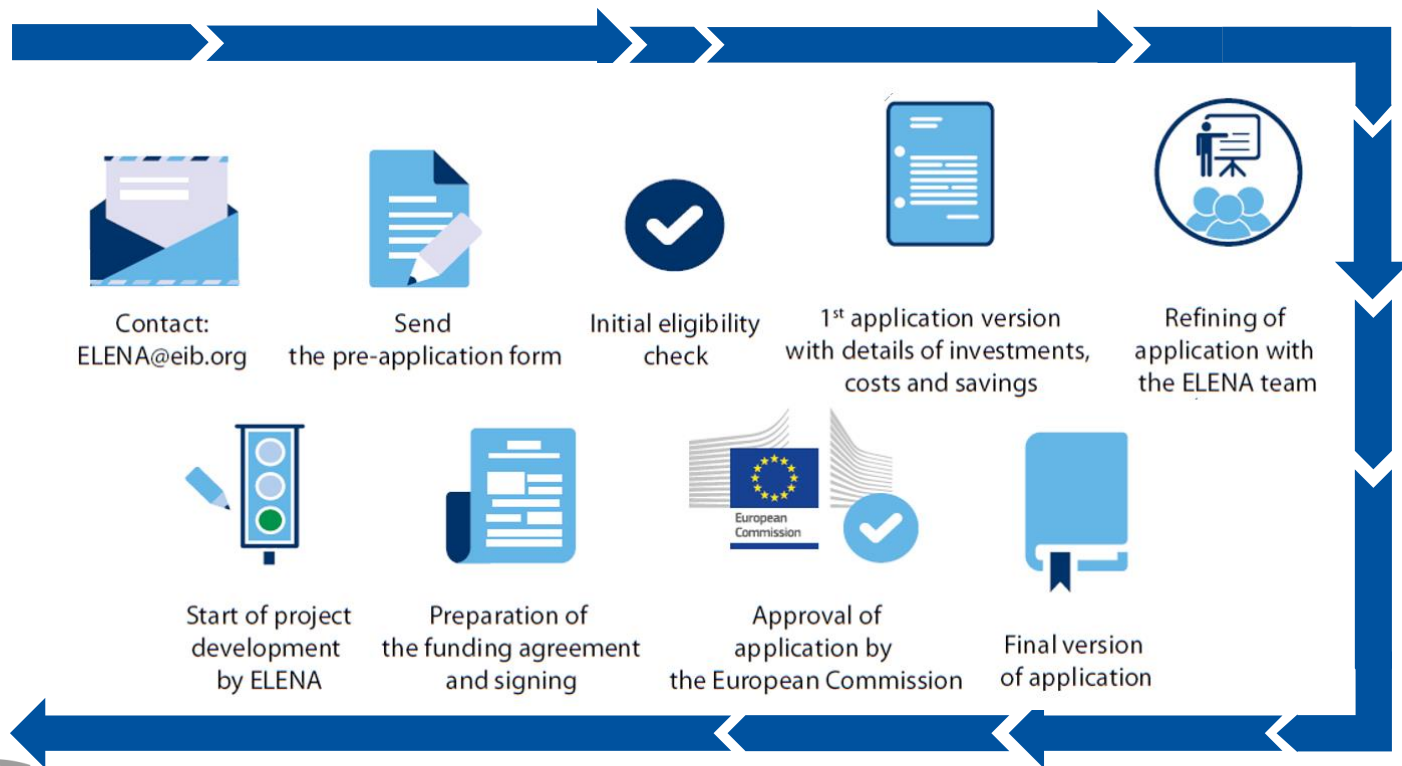
ELIGIBLE PROJECT DEVELOPMENT SERVICES (PDS)

Internal staff

**External
experts**

- Stakeholder engagement & co-ordination
- Promotion & marketing
- Feasibility & technical studies
- Energy audits
- Structuring, bundling & business plans
- Tendering procedures & documentation
- Legal/financial advisory
- Project management

APPLICATION PROCESS



Thank you for your attention

Further information:

EIB

www.eib.org

Sarunas Bruzge

s.bruzge@eib.org